

# Rugged, reliable and ready for work

Rugged mobile thermal printers

[www.brother.co.uk/RuggedJet](http://www.brother.co.uk/RuggedJet)







**Empower your  
workforce to  
print labels and  
receipts at any  
location**



# RuggedJet mobile thermal printers

Brother provides a comprehensive range of RuggedJet mobile thermal printers. Ready to use straight from the box, they have impressive print speeds and a rugged build quality to fit the requirements of a wide range of vertical market applications. Bluetooth, wireless and USB connectivity options make it possible for busy mobile workers to print on site or in the field.

## Rugged design

Due to the nature of many mobile applications, printers may be exposed to a range of outdoor conditions which can affect the print operation or cause damage e.g. traffic warden printing in the field. However, RuggedJet carries IP54 certification offering that extra peace of mind for such environments. In addition, the RuggedJet series is drop tested up to 2.5 metres to provide extra credibility in terms of toughness and reliability.



Up to 2"



Up to 3"

Up to 4"

# Trust RuggedJet mobile printers to take on every application

## Retail

Increase efficiency for retailers with lightweight, durable and easy to use mobile printers. Provides employees with a simple and accurate labelling and receipt solution, perfect for pricing, promotions and click and collect labels to increase customer satisfaction.



### Applications include:

- Shelf edge labels
- Mark down or discount labels
- Price labels
- Food safety labelling
- Click and collect labels
- Queue busting receipt printing.



## Transportation and logistics

Delivery drivers need to need to be equipped with a seamless solution to help streamline their workflow and minimise downtime. Mobility and integration are key, so drivers have access to systems providing pricing, invoicing, inventory control, and customer information, making it easier to produce invoices on-site.



### Applications include:

- Sales orders and confirmations
- Returned goods receipts and labels
- Customer receipts
- Delivery receipts.



## Field service

Whether there's a need for receipts or smaller format labels, without a mobile print solution, handwritten documents are time consuming and prone to error. That's why businesses are empowering their workforce with mobile technology, allowing them to complete tasks on the move, professionally and on schedule.



### Applications include:

- Receipts and invoices
- Repair estimates
- Statements of work
- Work orders
- Estimates and quotations
- Maintenance and service reports.





## Public service

Increase operational efficiency by allowing law enforcement officers and emergency staff to document and report incidents more accurately and efficiently, at the point of interaction. With their rugged design, fast print speed and reliable operation, the range offers a competitive combination of performance and features.



### Applications include:

- Parking violations
- Recording of accidents and crime scenes
- Electronic citations and fines
- Warning notices.



## Warehousing

Efficient warehousing operations and worker productivity are critical to the success of many companies. Using wireless connectivity, the RJ mobile printer range provides the ability to print barcode labels on-demand, at the point of application. This saves time and reduces potential errors caused by mislabelling.



### Applications include:

- Work-in-progress labels
- Bin and shelf labels
- Shipping and despatch labels
- Inventory pick and return tickets.





# RJ series range brief summary

RJ-2035B	RJ-2055WB	RJ-2030	RJ-2050	RJ-2140	RJ-2150
<b>2 Inch</b>					

## Printing

Print technology	Direct thermal				
Print speed	101.6mm/sec	152mm/sec			
Resolution	203dpi				
Max print width	48mm (receipt)	54mm (receipt)	54mm (receipt) 51mm (label)		

## Media types

Receipt	●	●	●	●	●	●
Labels					●	●

## Connectivity

USB	●	●	●	●	●	●
Wireless LAN		●		●	●	●
Bluetooth	●	●	●	●		●
AirPrint				●	●	●
MFi	●			●		●

## General

IP rating	IP42 (IP54 with optional case)	IP54			
Drop protection (metres)	1.8 (2.5 with optional case)	2.5			
Weight (with battery)	215g	465g	545g		
Dimensions (mm)	79(w) 36.5(h) 116(d)	122(w) 57(h) 100(d)	151(w) 73(h) 100(d)		
Operating system support	Microsoft® Windows® 7 Windows® 8.1 Windows® 10 Windows® Server 2012, 2012 R2, 2016, 2019 Linux Mac OS v10.11-10.15	Microsoft® Windows® 7 Windows® 8 Windows® 8.1 Windows® 10			
Mobile OS	Android / iOS	Android	Android / iOS		
Supported commands	FBPL-EZC (EPL2/ZPL2/CPCL) FBPL-EZP (EPL2/ZPL2/ESC-POS) - download	P-touch Template, ESC/P, Raster, ZPL II emulation, CPCL emulation			



# RJ series range brief summary

RJ-3035B	RJ-3055WB	RJ-3230B	RJ-3250WB	RJ-4230B	RJ-4250WB
3 Inch				4 Inch	

## Printing

Print technology	Direct thermal			Direct thermal	
Print speed	101.6mm/sec	127mm/sec		127mm/sec	
Resolution	203dpi			203dpi	
Max print width	72mm			104mm	

## Media types

Receipt	●	●	●	●	●
Labels		●	●	●	●

## Connectivity

USB	●	●	●	●	●
Wireless LAN		●		●	●
Bluetooth	●	●	●	●	●
AirPrint				●	●
MFi	●		●	●	●

## General

IP rating	IP42 (IP54 with optional case)		IP54		IP54
Drop protection (metres)	1.8 (2.5 with optional case)		2.0		2.1
Weight (with battery)	375g	375g	807g		850g
Dimensions (mm)	105(w) 49.5(h) 116(d)	105(w) 49.5(h) 116(d)	117(w) 77(h) 180(d)		153(w) 159(h) 68(d)
Operating system support	Microsoft® Windows® 7 Windows® 8.1 Windows® 10 Windows® Server 2012, 2012 R2, 2016, 2019 Linux Mac OS v10.11-10.15		Microsoft® Windows® 7 Windows® 8.1 Windows® 10 Windows® Server 2012, 2012 R2, 2016, 2019		Microsoft® Windows® 7 Windows® 8 Windows® 8.1 Windows® 10  <b>RJ-4250WB also supports:</b> Microsoft® Windows Server® 2008 2008 R2 / 2012 / 2012 R2 / 2016
Mobile OS	Android / iOS			Android / iOS	
Supported commands	FBPL-EZC (EPL2/ZPL2/CPCL) FBPL-EZP (EPL2/ZPL2/ESC-POS) - downloadable		P-touch Template, ESC/P, Raster, ZPL II emulation, CPCL emulation		P-touch Template, ESC/P, Raster, ZPL II emulation, CPCL emulation



## Up to 2 inch



RJ-2035B



RJ-2055WB



RJ-2030



RJ-2050



RJ-2140



RJ-2150

## Up to 3 inch



RJ-3035B



RJ-3055WB



RJ-3230B



RJ-3250WB

## Up to 4 inch



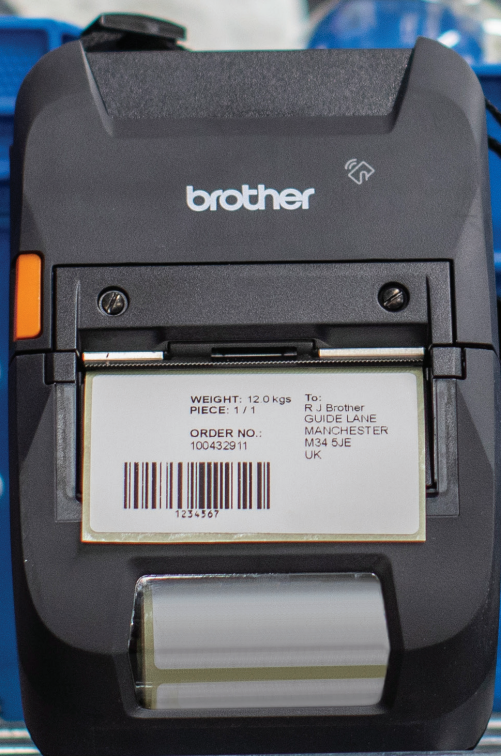
RJ-4230B



RJ-4250WB



Customise your  
RuggedJet  
printer with  
a great range  
of accessories





# Accessories and print supplies

Brother has designed and engineered a wide range of accessories to help customise labelling solutions, whatever the user requirement. From shoulder straps and platen rollers to charging cradles and smart batteries, Brother accessories help mobile workers to equip their device in-vehicle and on-body and ensure they last all shift long with smart batteries and flexible charging options.

## Power Options

### PA-BT-003

Li-ion rechargeable battery

RJ-2030 | RJ-2050  
RJ-2140 | RJ-2150



### PA-BT-006

Rechargeable Li-ion smart battery

RJ-3230B  
RJ-3250WB  
RJ-4230B | RJ-4250WB



### PA-BT-008

Li-ion rechargeable battery (standard)

RJ-2035B  
RJ-2055WB



### PA-BT-009

Li-ion rechargeable battery (standard)

RJ-3035B  
RJ-3055WB



### PA-BT-010

Li-ion rechargeable battery (smart)

RJ-3035B  
RJ-3055WB



### PA-AD-600AUK

AC adaptor (UK)

RJ-2030 | RJ-2050  
RJ-2140 | RJ-2150  
RJ-3230B | RJ-3250WB  
RJ-4230B | RJ-4250WB



### PA-AD-600AEU

AC adaptor (EU)

RJ-2030 | RJ-2050  
RJ-2140 | RJ-2150  
RJ-3230B | RJ-3250WB  
RJ-4230B | RJ-4250WB



### PA-CD-600CG

Car adaptor (cigarette)

RJ-2030 | RJ-2050  
RJ-2140 | RJ-2150  
RJ-3230B | RJ-3250WB  
RJ-4230B | RJ-4250WB



### PA-CD-600WR

Car adaptor (wired)

RJ-2030 | RJ-2050  
RJ-2140 | RJ-2150  
RJ-3230B | RJ-3250WB  
RJ-4230B | RJ-4250WB



### PA-BEK-001WR

Battery eliminator kit wired type

RJ-3230B | RJ-3250WB  
RJ-4230B | RJ-4250WB



### PA-BEK-001CG

Battery eliminator kit cigarette socket type

RJ-3230B | RJ-3250WB  
RJ-4230B | RJ-4250WB



### PA-CD-001CG

12-24V DC automobile cigarette lighter

RJ-2035B | RJ-3035B  
RJ-2055WB  
RJ-3055WB





## Media Options

### BDL-7J000058-040

#### Continuous receipt roll

RJ-2030 | RJ-2050  
RJ-2140 | RJ-2150  
RJ-3230B | RJ-3250WB  
RJ-4230B | RJ-4250WB

**Roll size:**  
58mm x 13.8m

**Colour:** white



### BDL-7J000076-066

#### Continuous receipt roll

RJ-3230B | RJ-3250WB

**Roll size:**  
76mm x 42m

**Colour:** white



### BDL-7J000102-058

#### Continuous receipt roll

RJ-4230B | RJ-4250WB

**Roll size:**  
101.6mm x 32.2m

**Colour:** white



### BDE-1J026051-060

#### Die cut labels roll

RJ-2140 | RJ-2150

**Label size:**  
51mm x 26mm

**Colour:** white

**Quantity:** 500



### BDE-1J044076-066

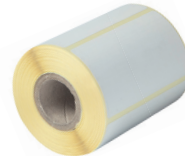
#### Die-cut labels roll

RJ-3230B | RJ-3250WB

**Label size:**  
76mm x 44mm

**Colour:** white

**Quantity:** 400



### BDE-1J152102-058

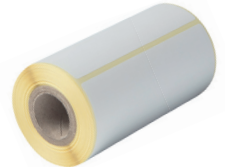
#### Die-cut labels roll

RJ-4230B | RJ-4250WB

**Label size:**  
102mm x 152mm

**Colour:** white

**Quantity:** 85



### BDE-1J000057-030

#### Continuous receipt roll

RJ-2035B | RJ-2055WB

**Roll size:**  
57mm x 6.6m

**Colour:** white



### BDE-1J000079-040

#### Continuous receipt roll

RJ-3035B | RJ-3055WB

**Roll size:**  
79mm x 14m

**Colour:** white



### BDE-1J044076-040

#### Die cut labels roll

RJ-3055WB

**Label size:**  
76mm x 44mm

**Colour:** white

**Quantity:** 70 per roll



# Software support features

## Template mode

Design the required document on your Windows PC, including logos and barcodes. Once transferred and stored in the printer's memory, the template can be recalled and any data replaced, before printing with just a few short commands.

## AirPrint\* and MFi\* support

Easily connect to, and print from Apple devices thanks to AirPrint and MFi support.

## Printer commands\*

With support for ZPL II emulation, CPCL emulation in addition to Brother ESC/P commands, developers can easily integrate mobile printing into existing legacy systems.

<https://www.brother.eu/developer>





Brother provides all the necessary tools required for software developers to integrate printing into their mobile applications. Printer drivers are available for Windows OS, and Software Development Kits can be provided to support Windows Mobile,\* Android and iOS operating systems.

\*Check model compatibility

## Mobile Deploy

Mobile Deploy is a cloud-based app that performs a complete printer configuration using a smart phone or tablet. The update process is easy, requiring a simple push of a button by the printer operator and Mobile Deploy transfers the full update and configuration. Companies can now maintain and update their entire fleet of Brother mobile printers simultaneously and instantaneously with a click of a button.



## Simple setup

Simply install the app on the devices and load the URL provided by your administrator.

### Simultaneous distribution

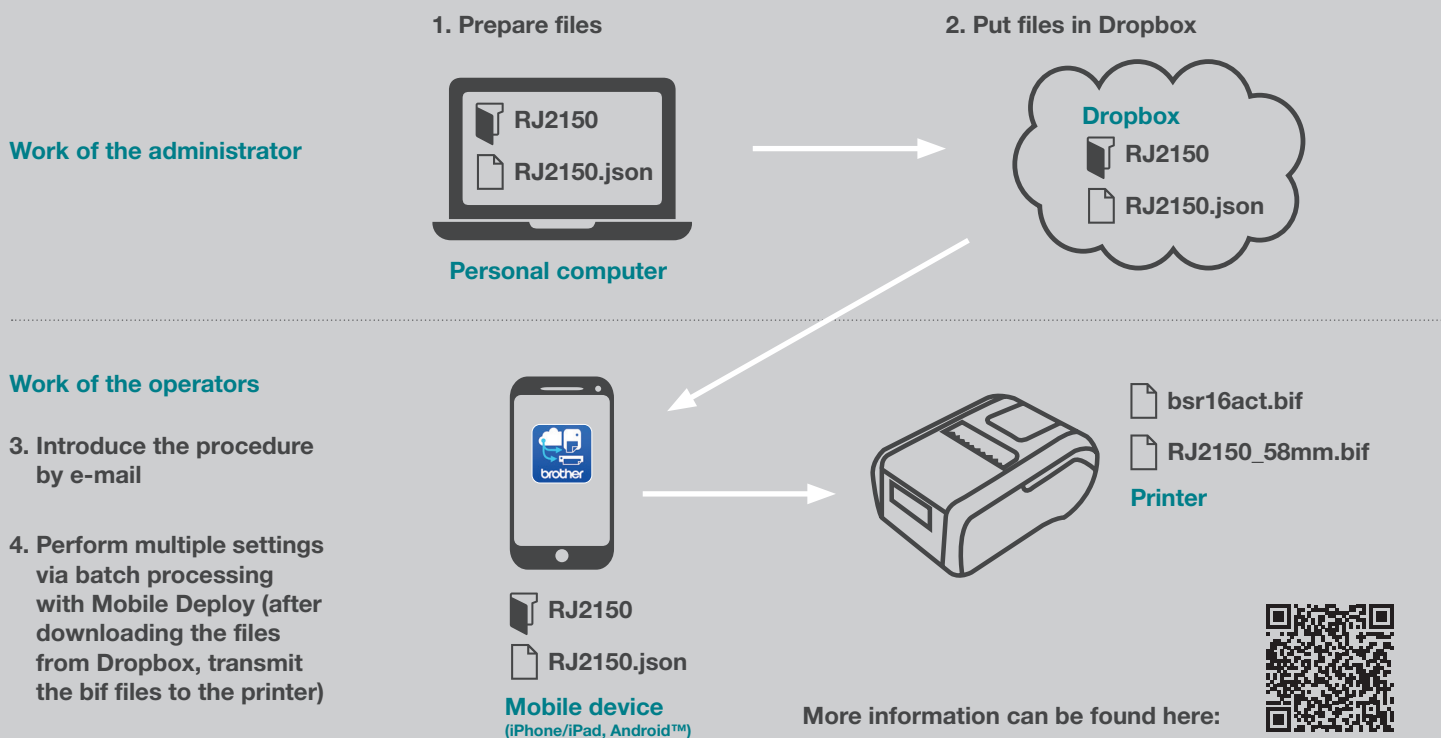
Post once and all printers in the field get updated.

### Auto update check

The app automatically checks for updates that have been posted.

### Complete updates

Firmware, settings, fonts, and templates can all be updated.



Compatible models: RJ-2000 Series, RJ-3200 Series, RJ-4200 Series, PJ-763, PJ-763MFi, PJ-773

## RJ range

2 inch

RJ-2035B	RJ-2055WB	RJ-2030	RJ-2050	RJ-2140	RJ-2150
<b>2 Inch</b>					

### Printing / media

Print technology	Direct thermal				
Print resolution	203dpi				
Print speed	Maximum 4ips (101.6mm/sec)	Maximum 6ips (152mm/sec)*			
Maximum print width on receipt	48mm	54mm			
Maximum print length	2794mm	1000mm			
Media sensor type	Reflective			Transmissive / Reflective	
Cutter type	Tear bar				
Media types	Receipt	Receipt, label**		Receipt, label, tag label	
Receipt width	58mm max				
Receipt paper thickness	2.3-3.5 mils (0.058-0.090mm)				
Label width				55mm	
Label thickness				3.1-6.7 mils (0.080-0.170mm)	
Roll diameter	30mm max	40mm max		50mm max	
Core diameter	10.2mm				

### LCD

Type	Backlit monochrome LCD				
------	------------------------	--	--	--	--

### Connectivity

USB	USB v2.0 (Micro-USB connector)		USB v2.0 full-speed (mini-B connector)		
Bluetooth	v5.0	v4.2	v2.1+EDR		
Bluetooth profiles	SPP (Serial Port Profile), GATT (Low Energy) / iAP supported	SPP (Serial Port Profile)	SPP (Serial Port Profile) OPP (Object Push Profile) BIP (Basic Imaging Profile) HCRP (Hard Copy Cable Replacement Profile)	SPP (Serial Port Profile) OPP (Object Push Profile) BIP (Basic Imaging Profile) HCRP (Hard Copy Cable Replacement Profile) iAP supported	
MFfi support	Yes			Yes	Yes
Wireless LAN		Wireless LAN IEEE802.11a/b/g/n		IEEE802.11b/g/n Infrastructure mode: [b/g/n] Adhoc mode: [b/g/n] Wireless direct mode: [g/n]	
Wireless LAN security (AdHoc mode)				None / WEP	
Wireless LAN security (Infrastructure mode)		Open system (None/WEP64/WEP128)  Common key authentication (WEP) WPA/WPA2-PSK (TKIP+AES) EAP-FAST (TKIP/AES) PEAP (TKIP/AES) *3 EAP-TLS (TKIP/AES) EAP-TTLS (TKIP/AES) Authentic method (encryption scheme)		None/WEP64/WEP128  Common key authentication (WEP) WPA/WPA2-PSK (TKIP+AES) LEAP (CKIP) EAP-FAST (TKIP/AES) PEAP (TKIP/AES) *3 EAP-TLS (TKIP/AES) EAP-TTLS (TKIP/AES)	
Wireless LAN security (Wireless direct mode)				None / WPA2-PSK (AES) / WEP	
NFC	Yes				

\* Under Brother standard environment

\*\* With black mark only



RJ-2035B	RJ-2055WB	RJ-2030	RJ-2050	RJ-2140	RJ-2150
<b>2 Inch</b>					

## Software / firmware

Operating system support	Microsoft® Windows® 7 Windows® 8.1 Windows® 10, Windows® 2012, 2012 R2, 2016, 2019 Linux Mac OS v10.11-10.15	Microsoft® Windows Vista® / Windows® 7 / Windows® 8 Windows® 8.1 / Windows® 10, Android 4.0.3 or higher (SDK) iOS 6 or higher (SDK)
SDK availability (visit <a href="http://www.brother.eu/developer">http://www.brother.eu/developer</a> )	Android v5 – v10 iOS v9 – v13.2	b-PAC (for Windows) Android 4.0.3 or higher (SDK) iOS 6 or higher (SDK)
Supported printer commands	FBPL-EZC (EPL2/ZPL2/CPCL) FBPL-EZP (EPL2/ZPL2/ESC-POS) - downloadable	ZPLII emulation, CPCL emulation ESC/P, P-touch Template, Raster
Barcode symbologies	Linear: Code128UCC, Code128 subsets A, B, C, EAN128, Interleaved 2 of 5, Interleaved 2 of 5 with check digit, Standard 2 of 5, Industrial 2 of 5, Code39, Code39 with check digit, Code93, EAN13, EAN8, UPCA, UPCE, EAN and UPC 2 (5) digits add-on, Codabar, Postnet, MSI, MSI with check digit, PLESSEY, China post, ITF14, EAN14, Code11, TELEPEN, TELEPEN number, PLANET, Code49, Deutsche Post Identcode, Deutsche Post Leitcode, LOGMARS 2-dimensional: CODABLOCK F mode, GS1 DataBar, GS1 DataMatrix, Maxicode, AZTEC, PDF417, QR Code, Micro PDF417, TLC39	CODE39 / ITF (I-2/5) / EAN-13 / EAN-8 / UPC-A / UPC-E / CODABAR / CODE128 / GS1-128(UCC/EAN-128) / RSS symbols / CODE93 / POSTNET / UPC/EAN EXTENSION / MSI / QR Code (model 1, model 2, micro QR) / PDF417 (Standard, Truncate, Micro- PDF417) / Data Matrix (ECC200 Square, ECC200 Rectangular) / MaxiCode / Aztec

## Memory

RAM	32MB	
Flash	16MB	32MB (12MB available for template upload)

## Environmental

Drop protection	2.5m (with IP54 optional case)	2.5m
Sealing	IP54 (with optional case)	IP54
Operating temperature	-15C to +50C	Operating: -10C to +50C / Charging: 0C to +40C
Operating humidity	10%-90% / Maximum web bulb: +27C (no condensation)	
Storage temperature	-30C to +70C	-20C to +60C for 120 hours maximum
Storage humidity	10% to 90% non-condensing	+45C @ 95% for 120 hours maximum

## Power

Battery	Rechargeable Li-ion	
AC adapter	AC adapter (15 V) only for charging (50/60Hz)	100-240V AC (50/60Hz) to 15V DC (only for charging) (optional)
Car adapter (optional accessory)	12V DC (only for charging)	

## Weights and dimensions

Dimensions (mm)	79(w) x 36.5(h) x 116(d)	122(w) x 57(h) x 100(d)	151(w) x 73(h) x 100(d)
Weight (including battery)	215g	465g	545g

## Included items

Supplied in box	Printer, belt clip, documentation, power adaptor, battery	Printer, belt clip, documentation, battery
-----------------	--	--

# RJ series range

## 3 & 4 inch

RJ-3035B	RJ-3055WB	RJ-3230B	RJ-3250WB	RJ-4230B	RJ-4250WB
3 Inch				4 Inch	

### Printing / Media

Print technology	Direct thermal			Direct thermal	
Print resolution	203dpi			203dpi	
Print speed	Maximum 4ips (101.6mm/sec)		Maximum 127mm/second (5ips)		Maximum 127mm/second (5ips)
Maximum print width on receipt	72mm			104mm	
Maximum print length	2794mm		3000mm		3000mm
Media sensor type	Reflective	Transmissive / Reflective			Transmissive / Reflective
Cutter type	Tear bar		Double tear bar		Double tear bar
Media types	Receipt	Receipt / label	Receipt/label/tag		Receipt / label / Tag label
Receipt width	80mm			113mm	
Receipt paper thickness	2.3-3.5 mils (0.058-0.090mm)			2.2 mil to 3.5 mil (0.058mm to 0.090mm)	
Label width	-		76mm		113mm
Label thickness	-		-		3.1 mil to 6.6 mil (0.080mm to 0.170mm)
Roll diameter	40mm max		66mm max		58mm max
Core diameter	-		Standard : 25.4mm (Default) In-box : 12.7mm-13.0mm or 19.0mm		12.7mm (receipt) / 25.4mm (labels)

### LCD

Type	-	Mono		Mono	
------	---	------	--	------	--

### Connectivity

USB	Yes		Yes (USB-C)		Yes	
USB host capability	-		No		-	
Bluetooth	v5.0	v4.2	v5.0		v4.2	
Bluetooth profiles	SPP (Serial Port Profile), GATT (Low Energy)/ iAP supported	SPP (Serial Port Profile) GATT (Low Energy)	SPP (Serial Port Profile) OPP (Object Push Profile) HCRP (Hard Copy Cable Replacement Profile) iAP supported Low Energy: GATT		Classic: SPP (Serial Port Profile) OPP (Object Push Profile) HCRP (Hard Copy Cable Replacement Profile) iAP supported Low Energy: GATT	
MFi support	Yes	No	Yes		Yes	
Wireless LAN	-	Wireless LAN IEEE802.11a/b/g/n	-	IEEE802.11a/b/g/n/i/r Infrastructure mode: IEEE802.11a/b/g/n/i/r Wireless Direct mode: IEEE802.11g/n/d/i	-	Wireless LAN IEEE802.11 [a/b/g/n] (Infrastructure mode: [a/b/g/n] / Wireless direct mode: [g/n])
Wireless LAN security (AdHoc mode)	-	-	-	Authentic method (encryption scheme)	-	
Wireless LAN security (Infrastructure mode)	-	Authentic method (encryption scheme) Infrastructure mode: Open system (None/ WEP64/WEP128) WPA/WPA2-PSK (TKIP+AES) EAP-FAST (TKIP/AES) PEAPv0 (TKIP/AES) EAP-TLS (TKIP/AES) EAP-TTLS (TKIP/AES)	-	SSL/TLS1.0/1.1/1.2 (HTTPS, IPPS) SNMPv3, 802.1x (EAP-FAST, PEAP, EAP-TLS, EAP-TTLS) WEP 64/128 bit, WPA-PSK (TKIP/AES), WPA2-PSK (AES), WPA3-SAE (AES)	-	Open system (None/ WEP64/WEP128) Common key authentication (WEP) WPA/WPA2-PSK (TKIP+AES) EAP-FAST (TKIP/AES) PEAP (TKIP/AES) *3 EAP-TLS (TKIP/AES) EAP-TTLS (TKIP/AES)
Wireless LAN security (Wireless direct mode)	-	-	WPA2-PSK (AES)	WPA2-PSK (AES)	-	WPA2-PSK (AES)
NFC	Yes	Yes	Yes (Passive only)		Yes (Passive only)	

\* Black mark only



RJ-3035B	RJ-3055WB	RJ-3230B	RJ-3250WB	RJ-4230B	RJ-4250WB
<b>3 Inch</b>				<b>4 Inch</b>	

## Software / Firmware

Operating system support

Visit: <http://support.brother.com>  
for latest OS support

	Microsoft® Windows® 7 Windows® 8.1 Windows® 10 Windows® Server 2012, 2012 R2, 2016, 2019 Linux Mac OS v10.11-10.15	Microsoft® Windows® 7, 8.1, 10 Windows® Server 2012, 2012 R2, 2016, 2019	Microsoft® Windows® Vista® / Windows®7 Windows Vista® / Windows®7 / Windows®8 Windows®8.1 / Windows®10 Microsoft® Windows Server® 2003 / 2008 / 2008 R2 / 2012 / 2012 R2
SDK availability <a href="https://support.brother.com/g/s/es/dev/en/index.html">https://support.brother.com/g/s/es/dev/en/index.html</a>	Android v5 - v10 iOS v9 - v13.2	Android v6 - v11 iOS v10 - v14	Android 4.0.3 or later iOS 7 or later
Supported printer commands	FBPL-EZC (EPL2/ZPL2/CPCL) FBPL-EZP (EPL2/ZPL2/ESC-POS) - downloadable	Raster, ESC/P, P-touch Template, ZPL II emulation, CPCL emulation	Raster, ESC/P, P-touch Template, ZPL II emulation, CPCL emulation
Barcode symbologies  Supported barcodes depend on printer commands. Please refer to the command reference for details.	Linear: Code128UCC, Code128 subsets A, B, C, EAN128, Interleaved 2 of 5, Interleaved 2 of 5 with check digit, Standard 2 of 5, Industrial 2 of 5, Code39, Code39 with check digit, Code93, EAN13, EAN8, UPCA, UPCE, EAN and UPC 2 (5) digits add-on, Codabar, Postnet, MSI, MSI with check digit, PLESSEY, China post, ITF14, EAN14, Code11, TELEPEN, TELEPEN number, PLANET, Code49, Deutsche Post Identcode, Deutsche Post Leitcode, LOGMARS, 2-dimensional: CODABLOCK F mode, GS1 DataBar, GS1 DataMatrix, Maxicode, AZTEC, PDF417, QR Code, Micro PDF417, TLC39	CODE39, CODE93, ITF(I-2/5), EAN-8, EAN-13, UPC-A, UPC-E, CODABAR(NW-7), CODE128, GS1-128(UCC/EAN-128), GS1 DataBar (Standard, Truncated, Stacked, Stacked Omnidirectional), GS1 DataBar Limited, GS1 DataBar Expanded (Standard, Stacked), POSTNET, UPC/EAN EXTENSION, MSI, Intelligent Mail Barcode, QR Code, Micro QR Code, PDF417, MicroPDF417, MaxiCode, DataMatrix, Aztec	Linear: CODE 39, ITF(I-2/5), EAN-8, EAN-13, UPC-A, UPC-E, UPC/EAN EXTENSION CODABAR, CODE 128, GS1-128 (UCC/EAN 128), POSTNET, GS1 Databar (Omnidirectional / Truncated / Stacked / Stacked Omnidirectional / Limited / Expanded / Expanded Stacked) CODE93, MSI/Plessey Intelligent Mail Barcode  2-dimensional: QR Code (model 1, model 2, micro QR), Maxi code, PDF417 (Standard, Truncate) MicroPDF417, Data Matrix (Square, Rectangular) AztecCode

## Memory

RAM	32MB	256MB	256MB
Flash	16MB	128MB	64MB

## Environmental

Drop protection	2.5 metres (with optional IP54 case)	2 metres	2.1 metres
Sealing	IP54 (with optional case)	IP54	IP54
Operating temperature	-15 to 50°C	Operate: -20°C to 55°C Charging: 0°C to 40°C	Battery: -20°C to 55°C AC adapter: -10°C to 40°C. Car adapter: -10°C to 50°C
Operating humidity	10-90%, Max wet bulb: 27 deg C (No condensation)	10% to 90% non-condensing	10-90%, Max wet bulb: 27 deg C (No condensation)
Storage temperature	-30C to +70 deg C	-20°C to 60°C	-20C to +60 deg C
Storage humidity	10% to 90% non-condensing	10% - 90% non-condensing	10% - 90%, Max wet bulb: 45 deg C (No condensation)

## Power

Battery	Rechargeable Li-ion	Rechargeable Li-ion smart battery	Rechargeable Li-ion smart battery (optional)
AC adapter	AC adapter (15 V) only for charging (50/60Hz)	AC adapter (15 V) only for charging (optional)	AC adapter (15 V) only for charging (50/60Hz) (optional)
Car adapter (optional accessory)	Cigarette car adapter or Wired type (12 V (DC)) only for charging		

## Weights / Dimensions

Dimensions (mm)	105 (W) x 49.5 (H) x 116 (D) mm		117 (W) x 77 (H) x 180 (D) mm		153(w) x 68h) x 159(d) mm	
Weight (including battery)	375g	375g	807g	807g	850g	

## Included items

Supplied in box	Belt clip Documentation Power adaptor Battery	Belt Clip Li-ion battery Roll Holder Stop Media discs Documentation	Printer Belt clip Adjuster guide lockers
-----------------	--	---	--



For more information visit  
[www.brother.co.uk/RuggedJet](http://www.brother.co.uk/RuggedJet)  
or contact [enquiries@brother-uk.com](mailto:enquiries@brother-uk.com)







**brother**  
at your side

Contact:

[www.brother.co.uk/RuggedJet](http://www.brother.co.uk/RuggedJet)

**Brother UK Ltd**

Shepley Street, Audenshaw,  
Manchester M34 5JD

Tel: +44 (0) 161 333 777 4444

Fax: +44 (0) 161 931 2218

E-mail: [enquiries@brother-uk.com](mailto:enquiries@brother-uk.com)